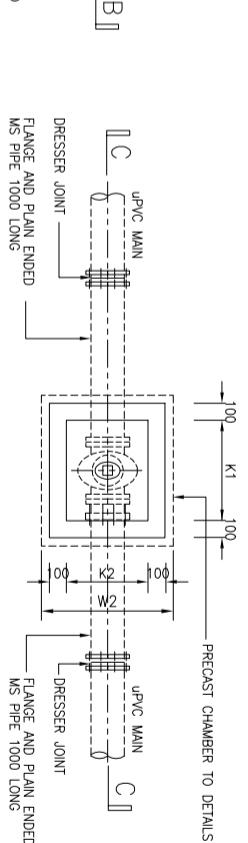
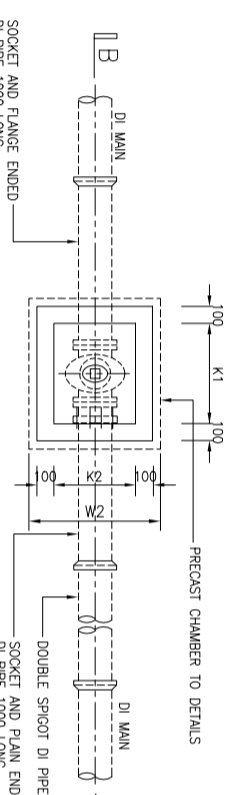
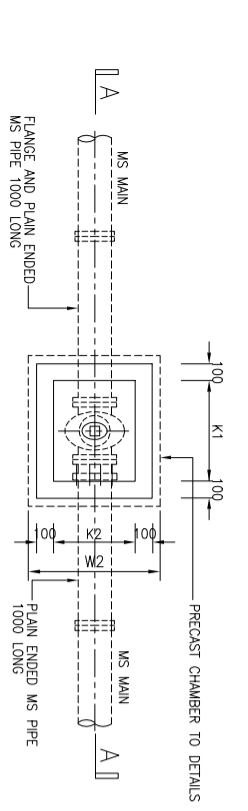
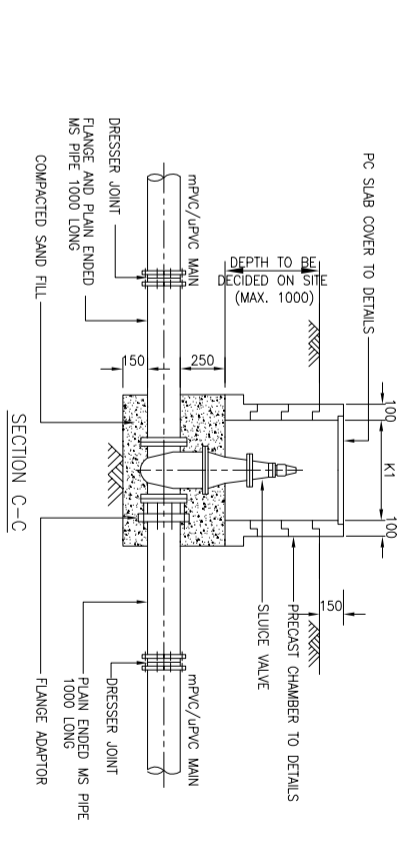
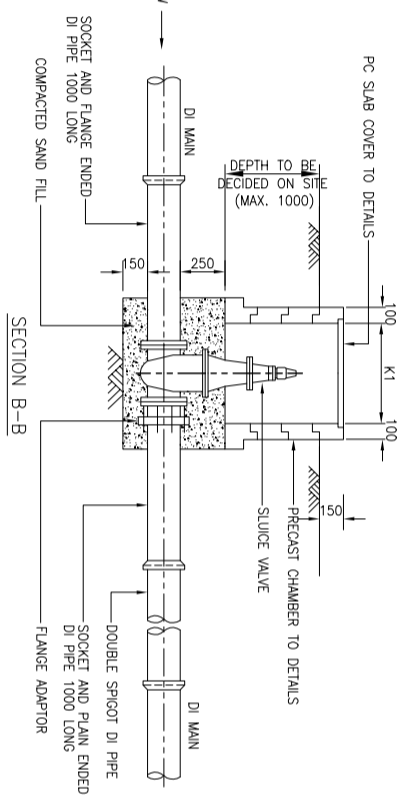
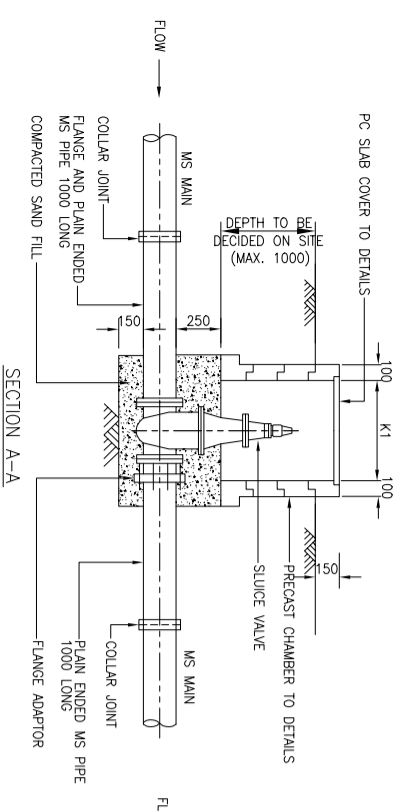


NOTE:

1. ALL DIMENSIONS ARE IN MILLIMETRE AND LEVELS ARE IN METRE UNLESS OTHERWISE STATED
2. ALL REINFORCED CONCRETE TO BE GRADE 30
3. REINFORCEMENT TO COMPLY BS 4449
R WITH $f_y = 250N/mm^2$
T WITH $f_y = 460N/mm^2$
4. TYPE 'A' FOR SLUICE VALVE CHAMBER.
TYPE 'B' FOR AIR VALVE CHAMBER.



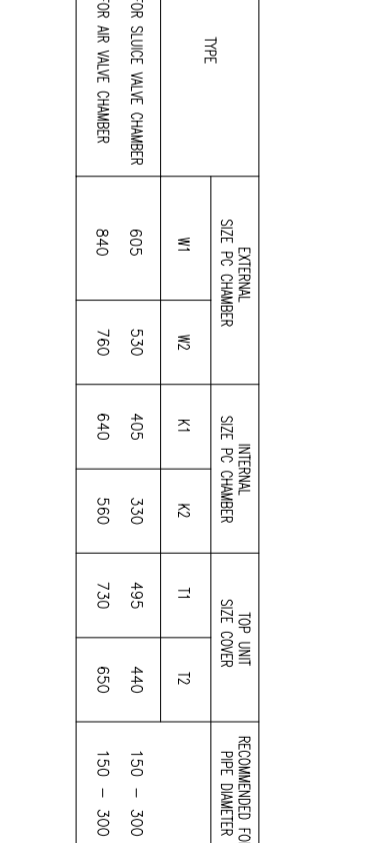
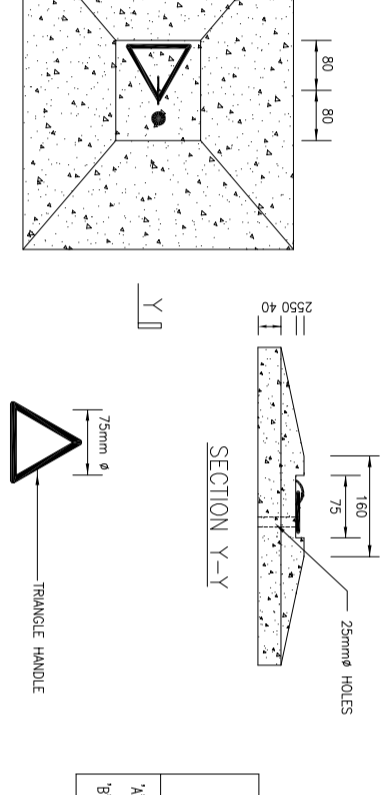
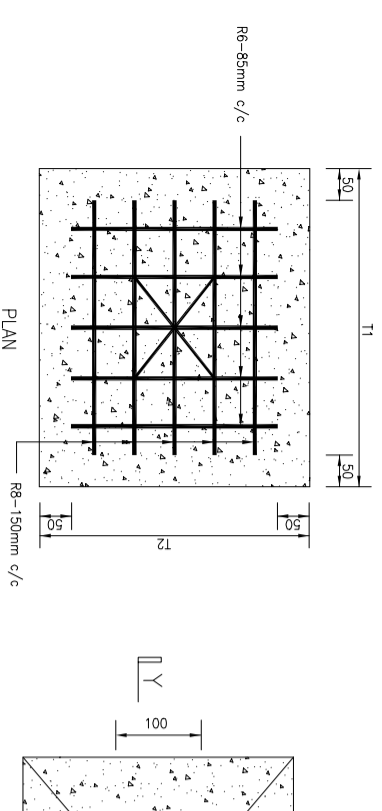
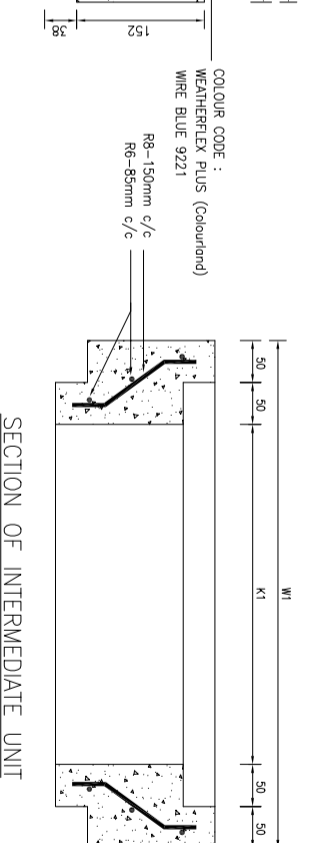
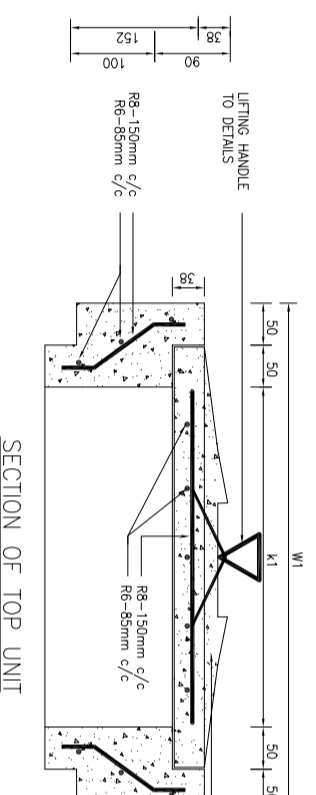
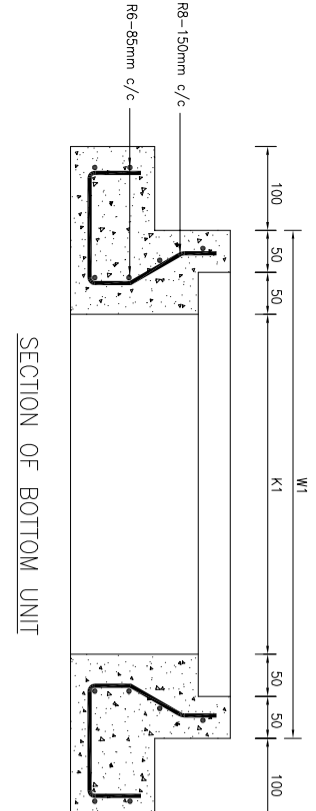
REV.	REVISION	DESCRIPTION	DATE

SAJ Holdings Sdn. Bhd. (476718-H)
Jalan Garuda Larkin, P.O. Box 282,
81350 Johor Bahru, Johor, Malaysia
T: +607-224 4040 F: +607-224 0033
180-963-7474 sms: 019772 7474 www.saj.com.my customer.com@saj.com.my



PROJECT:
DRAWING TITLE:
DRAWN BY: MAZZ
CHECKED: MFB
SCALE: NOT TO SCALE
DATE: DECEMBER 2013
DESIGNED: W/C
APPROVED: T.C
SAJ/STD/CH/13

TYPE	EXTERNAL SIZE PC CHAMBER		INTERNAL SIZE PC CHAMBER		TOP UNIT SIZE COVER		RECOMMENDED FOR PIPE DIAMETER
	W1	W2	K1	K2	T1	T2	
'A' FOR SLUICE VALVE CHAMBER	605	530	405	330	495	440	150 - 300
'B' FOR AIR VALVE CHAMBER	840	760	640	560	730	650	150 - 300



REINFORCEMENT BAR FOR CHAMBER COVER AT ROAD SIDE
(NOT SUITABLE IN CARRIAGEWAY)

DETAIL OF LIFTING HANDLE

DETAIL OF TRIANGLE HANDLE