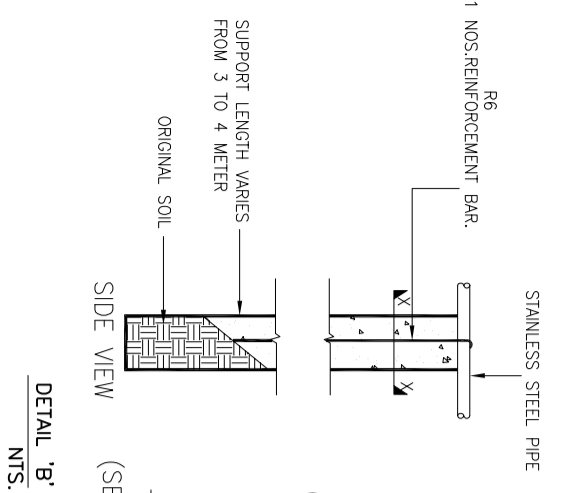
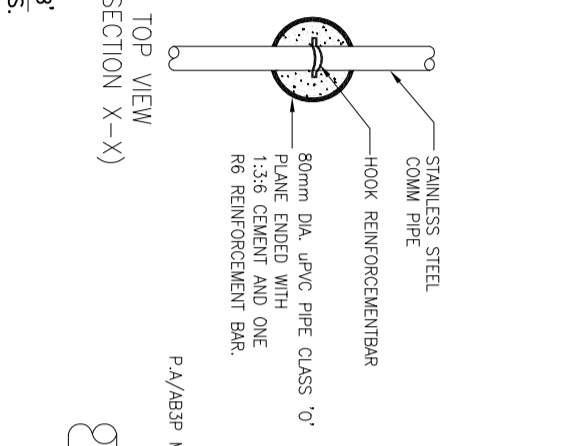


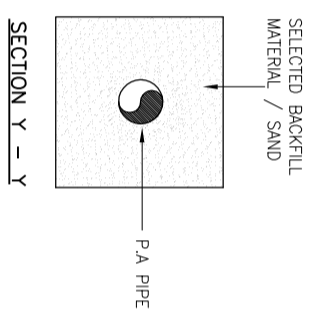
TYPICAL DETAIL FOR P.A COMMUNICATION PIPE AT STREAM CROSSING  
NTS.



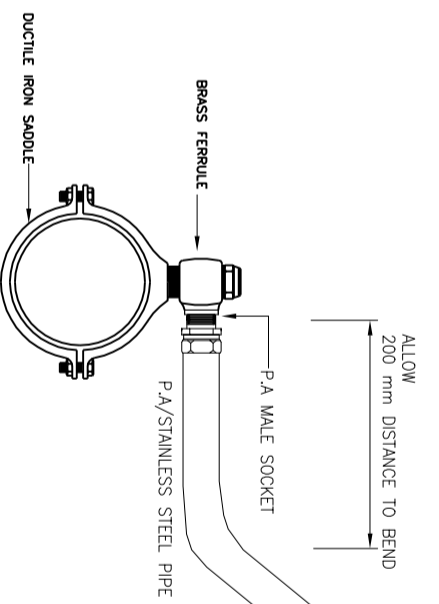
DETAIL 'B'  
NTS.



DETAIL 'C'  
NTS.



SECTION Y - Y



DETAIL 'A' : FURRELE TO MALE SOCKET  
NTS.

- NOTE:
1. P.A (POLYETHYLENE ALUMINIUM).
  2. ALL PIPE MATERIALS AND BRASS SPECIALS TO SPAN APPROVAL.
  3. SIZE OF G.I SLEEVE CLASS 'B' MUST BE ONE GRADE HIGHER FROM THE COMM PIPE SPECIFIED.
  4. NO OPEN CUT TRENCHING IS ALLOWED.
  5. STAINLESS STEEL PIPE SHOULD BE OF SS40.
  6. REINFORCEMENT TO COMPLY BS 4449 : R WITH  $f_y = 250 \text{ N/mm}^2$ .

REV.	REVISOR	DESCRIPTION	DATE



**SAJ Holdings sdn Bhd.** (478718-H)  
 Jalan Garuda, Larkin, P.O Box 282,  
 80350 Johor Bahru, Johor, Malaysia  
 T. +607 - 224 4040 F. +607 - 224 0033  
 1800-887474 smb 015-7727474 www.saj.com.my customer@sj.com.my

PROJECT :

DRAWING TITLE :

DETAILS OF P.A COMMUNICATION PIPE AT STREAM CROSSING

DRAWN BY : MAZZ	DESIGNED : W/C
CHECKED : MFB	APPROVED : T/C
SCALE : NOT TO SCALE	DATE : DECEMBER 2013
DRAWING NO : SAJ/STD/COM/02	