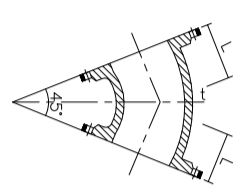
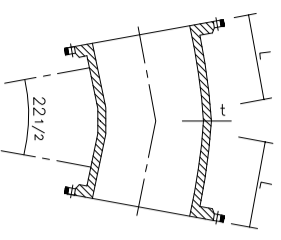


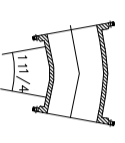
DOUBLE FLANGED  
90° BEND



DOUBLE FLANGED  
45° BEND



DOUBLE FLANGED  
22 1/2 BEND



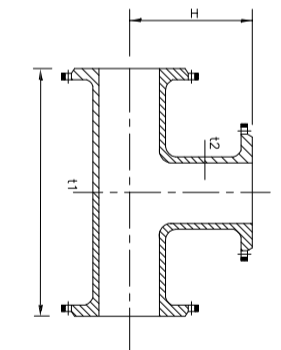
DOUBLE FLANGED  
11 1/4 BEND

TABLE FOR ALL FLANGED BEND

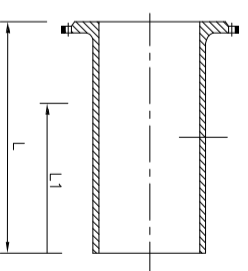
NORMAL DIAMETER ND(mm)	OUTER DIAMETER OD(mm)	PLATE THK. t (mm)	90° L(mm)	45° L(mm)	22 1/2° L(mm)	11 1/4° L(mm)
100	118	7.2	180	140	140	140
150	170	7.8	220	150	160	160
200	222	8.4	260	180	180	180
250	274	9.0	350	350	350	350
300	326	9.5	400	400	400	400
350	378	10.2	450	298	298	298
400	429	10.8	500	324	324	324

TABLE FOR ALL FLANGED TEE

NORMAL DIAMETER ND(mm)	OUTER DIAMETER OD(mm)	BARREL PLATE THK. t1 (mm)	L(mm)	BRANCH		H(mm)
				t2 (mm)	H(mm)	
100x100	118x118	7.2	360	7.2	180	180
150x50	170x65	7.8	330	7.0	170	170
150x150	170x170	7.8	440	7.8	220	220
200x50	222x65	8.4	330	7.0	185	185
200x150	222x170	8.4	460	7.8	245	245
200x200	222x222	8.4	520	8.4	260	260
250x50	274x65	9.0	375	7.0	255	255
250x150	274x170	9.0	485	7.8	280	280
250x200	274x222	9.0	540	8.4	290	290
250x250	274x274	9.0	600	9.0	300	300
300x50	326x65	9.6	405	7.0	290	290
300x150	326x170	9.6	505	7.8	310	310
300x200	326x222	9.6	565	8.4	320	320
300x300	326x326	9.6	680	9.6	340	340
400x80	429x98	10.8	470	7.0	335	335
400x150	429x170	10.8	550	7.8	370	370
400x200	429x222	10.8	510	8.4	380	380
400x300	429x326	10.8	765	9.6	400	400
400x400	429x429	10.8	840	10.8	420	420



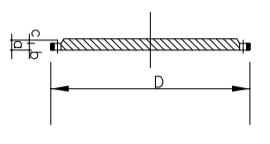
ALL FLANGED TEE



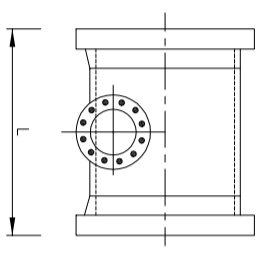
FLANGED SPIGOT

TABLE FOR ALL FLANGED SPIGOT

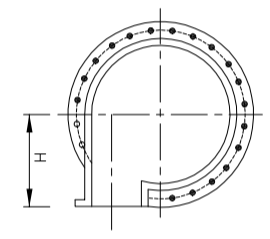
NORMAL DIAMETER ND (mm)	L (mm)	L1 (mm)
100	380	215
150	380	225
200	400	230
250	420	240
300	440	250
350	460	260
400	480	270



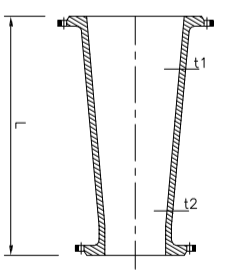
BLANK FLANGED



ALL FLANGED LEVEL INVERT TEE



FLANGED SOCKET



DOUBLE FLANGED TAPER

TABLE FOR BLANK FLANGED

NORMAL DIA. NDxnd (mm)	OUTER DIA. ODxod (mm)	PN10			PN18				
		D (mm)	d (mm)	b (mm)	c (mm)	D (mm)	d (mm)	b (mm)	c (mm)
100	118	220	19.0	16.0	3	220	19.0	16.0	3
150	174	285	19.0	16.0	3	285	19.0	16.0	3
200	222	340	20.0	17.0	3	340	20.0	17.0	3
250	274	400	22.0	19.0	3	400	22.0	19.0	3
300	326	455	24.5	20.5	4	455	24.5	20.5	4
350	378	505	24.5	20.5	4	520	26.5	22.5	4
400	429	565	24.5	20.5	4	580	28.0	24.0	4

TABLE FOR ALL FLANGED LEVEL INVERT TEE FOR WASHOUT

NORMAL DIAMETER ND (mm)	BRANCH nd (mm)	OUTER DIAMETER OD (mm)	BRANCH od (mm)	L (mm)	H (mm)
200	100	222	118	400	235
250	100	274	118	490	275
300	100	326	118	480	305
350	100	378	118	480	330
400	100	429	118	500	365

TABLE FOR FLANGED SOCKET

NORMAL DIA. ND(mm)	OUTER DIA. OD(mm)	PLATE THK. t (mm)	L (mm)
100	118	7.2	130
150	170	7.8	135
200	222	8.4	140
250	274	9.0	145
300	326	9.6	150
350	378	10.5	155
400	429	10.8	180

TABLE FOR DOUBLE FLANGED TAPER

NORMAL DIA. NDxnd (mm)	OUTER DIA. ODxod (mm)	PLATE THK. t1 (mm)	PLATE THK. t2 (mm)	L (mm)
100x80	118x98	7.2	7.0	200
200x150	224x170	8.4	1.8	300
300x250	326x274	9.6	9.0	300
400x350	429x274	10.8	10.2	300

NOTE :  
1. ALL DIMENSIONS ARE IN MILLIMETER UNLESS OTHERWISE STATED.  
2. ALL DIMENSIONS ARE TO BE SHOWN ON THE DRAWING UNLESS OTHERWISE STATED.  
RATING OF 10 BARS UNLESS OTHERWISE STATED.

REV.	REVISION BY	DESCRIPTION	DATE



**SAJ Holdings Sdn Bhd.** (478718-H)  
Jalan Garuda, Larkin, P.O Box 262,  
80350 Johor Bahru, Johor, Malaysia  
T. +607 - 224 4040 F. +607 - 224 0033

1800-88-8778 Fax 018-272 7474 www.saj.com.my cad@www.saj.com.my  
PROJECT :

DRAWING TITLE :  
DETAILS AND SCHEDULE OF DI PIPES SPECIALS

DRAWN BY : MAZZ  
CHECKED : MFB  
SCALE : NOT TO SCALE  
DRAWING NO : SAJ/STD/OPS/02

DESIGNED : W/C  
APPROVED : T/C  
DATE : DECEMBER 2013